



***“TAKING THE NEXT STEP:
TRANSITIONS IN CARE/TRANSITIONS
IN LIFE”***

***MIDWEST REGION NMPRA
MEETING***

SATURDAY, MAY 12, 2012

PRITZKER SCHOOL OF MEDICINE

**Sponsored by ICAAP, the Comer Classic Fund, the
Kovler Diabetes Center, University of Chicago
Med-Peds Residency and NMPRA.**

SCHEDULE FOR THE DAY

- **7:00-7:50: Welcome, Registration and Continental Breakfast. Completion of Transition Care Survey (Lobby)**
- **CME and nursing credits: Must fill out forms before you leave today.**
- **8:00-9:00: The A,B,C's of Caring for Youth and Young Adults with Special Health Care Needs (Room 109)**
- **9:00-9:50: KEYNOTE SPEAKER: Jeffrey Arnett, PhD: Emerging Adulthood (Room 109)**



SCHEDULE FOR THE DAY (CONTINUED)

- **9:50–10:05: Break for Viewing Posters, Questions**
- **10:05-11:15: Transition Care Models/ Programs in Progress (Room 109)**
- **11:15-11:20: Break for posters/ questions**
- **11:20-12:20: ICAAP Presentation. Moderated Panel Presentation by Two Recently Transitioned Young Adults with Special Health Care Needs (Room 109)**
- **12:20-1:00: Lunch**



SCHEDULE FOR THE DAY (CONTINUED)

1:00-1:45: Break-out Sessions for Transition Care

**Subspecialty Groups (adult and pediatric):
(Room 218)**

**Generalist Groups (adult and pediatric);
(Room 202)**

**Patient Small Group: Question and Answer
with the patients from the morning
session (Room LL109)**



SCHEDULE FOR THE DAY (CONTINUED)

- **1:45-2:00: Break /Poster Viewing**
- **2:00-2:45: ICAAP Presentation on Transition Tools (Room 109)**
- **2:45-3:00: NMPRA President, Winning Poster presentation, CME and Conference Forms (Room 109)**
- **This concludes CME portion of the event. NMPRA specific presentations will continue through afternoon for Meds-Peds Program Directors, students, residents and fellows.**



SCHEDULE FOR THE DAY (CONTINUED)

3:00-3:40: Break-out sessions for NMPRA-specific sessions

- **Program Director and Resident Panel:** For students interested in MedPeds (Room 218)
- **Fellowship Panel:** For MedPeds residents applying or interested in applying for fellowships (Room 202)

3:40: Adjourn. Hand in CME forms and Conference Evaluation





A,B,C's of Transition Care: Introduction and Overview

Rita Rossi-Foulkes, MD, FAAP,
MS, FACP

Midwest Region NMPRA
Meeting: May 12, 2012

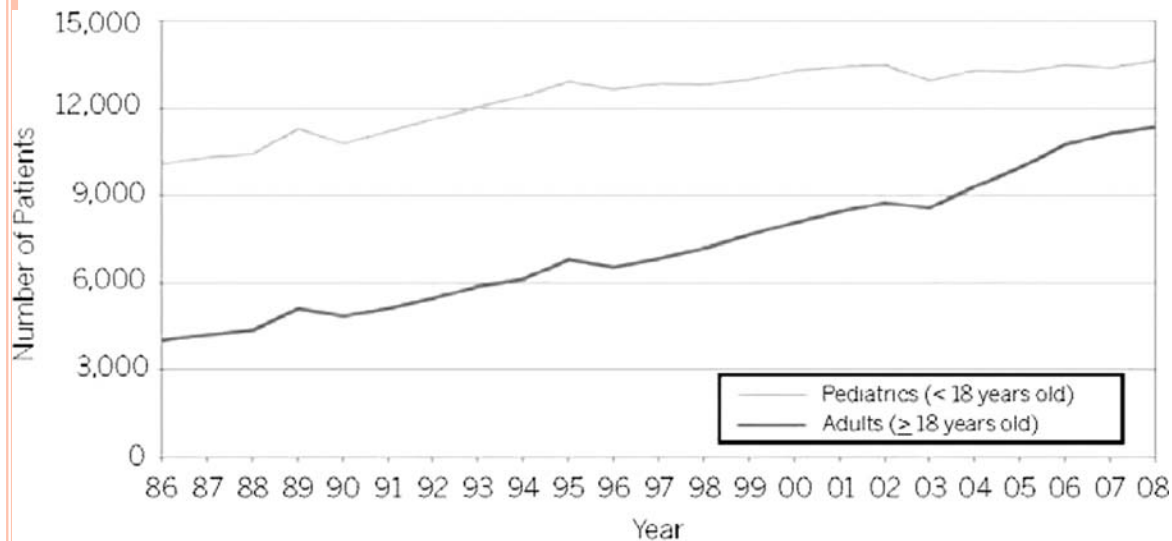
TRANSITION CARE

- Definition: the movement from adolescence to adulthood
 - Home
 - Health care
 - Education
 - Community
- So... how does this change if you have a patient with:
 - Developmental disability?
 - Intellectual disability?
 - Chronic medical conditions?



THE SCOPE OF THE PROBLEM:

- 500,000 youth in the US with special health-care needs graduate to adulthood yearly
 - YSHCN account for 13% of all youth but 70% of medical expenditures



Trends in number of patients with CF, 1986–2008.

Tuchman L K et al. Pediatrics 2010;125:566-573

The number of adults with CF has steadily increased over the past decade.
The number of children has remained relatively stable.



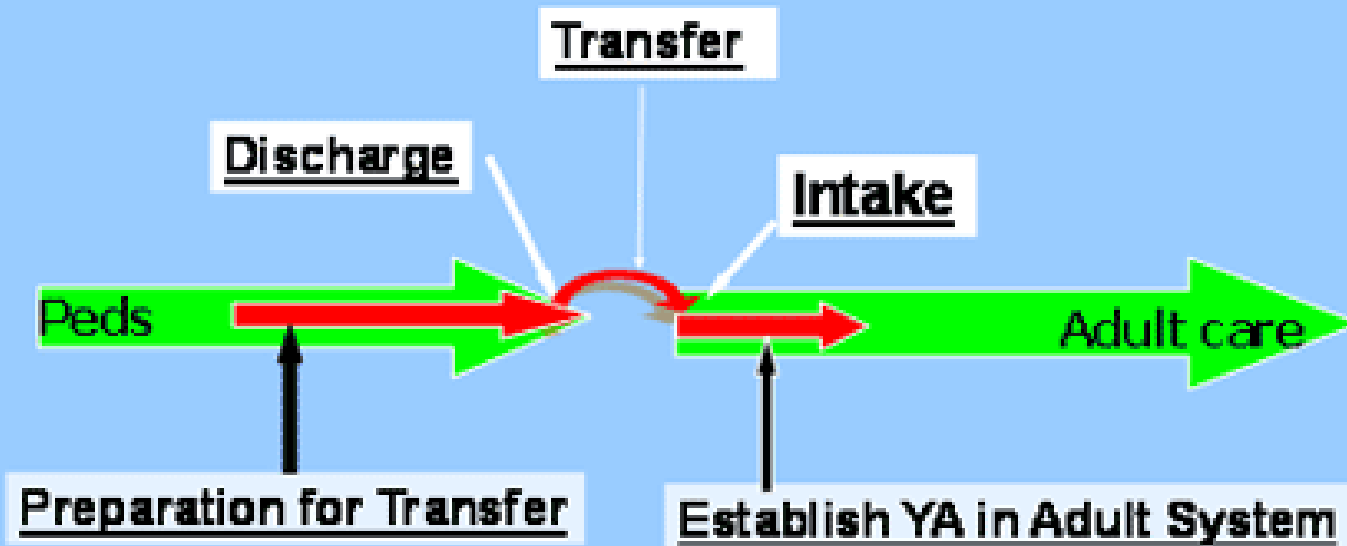
SUPPORTING THE HEALTH CARE TRANSITION FROM ADOLESCENCE TO ADULTHOOD IN THE MEDICAL HOME: AAP, AAFP, ACOP: JULY, 2011




1. Ensure that all young people who have special health-care needs have an identified health-care professional who attends to the unique challenges of transition and assumes responsibility for current health care, care coordination, and future health-care planning.
2. Identify core knowledge and skills required to provide developmentally appropriate health-care transition services to young people who have special health-care needs and make them part of training requirements for residents and physicians.
3. Prepare and maintain an up-to-date medical summary that is portable and accessible.
4. Create a written health-care transition plan by age 14 with the young person and family which should contain what services needed, who will provide them, how they will be financed.
5. Apply the same guidelines for primary and preventive care for all adolescents and young adults.
6. Ensure affordable, continuous health insurance coverage for all young people who have special health-care needs throughout adolescence and adulthood.



HCT Process for AYA with Chronic Conditions and Disabilities



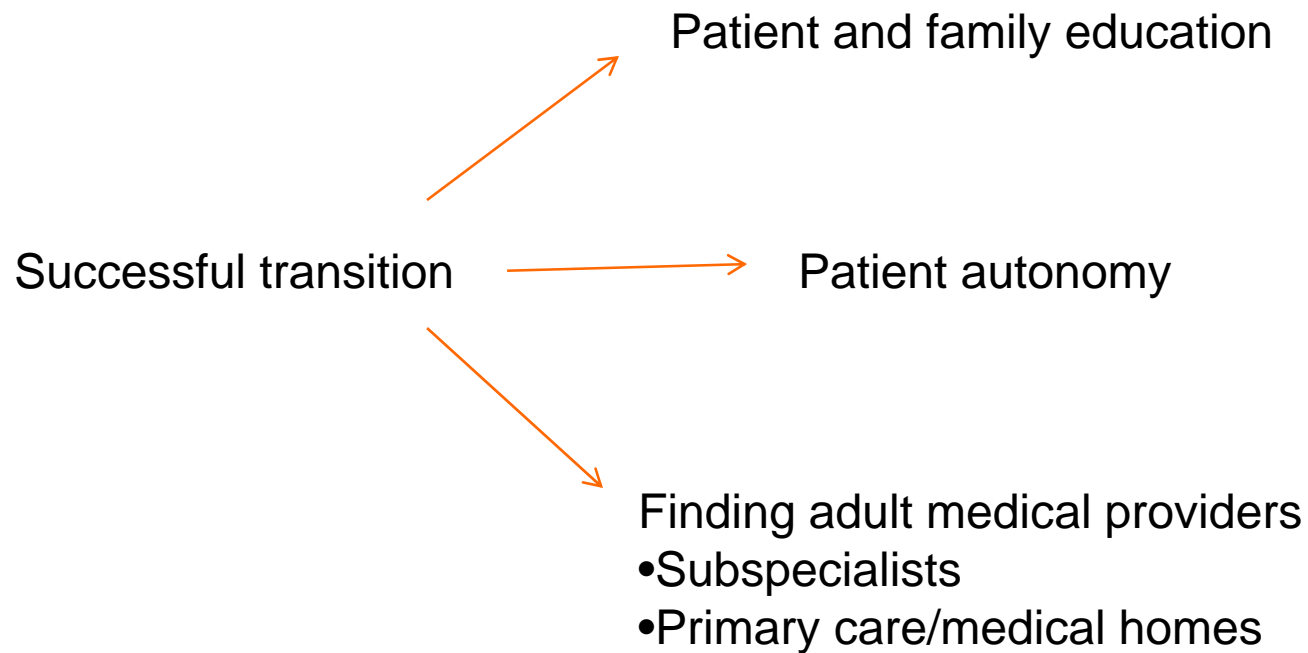
BARRIERS TO SUCCESSFUL TRANSITION

- Medical competency
 - Family involvement
 - Psychosocial needs
 - System issues
 - Maturity/autonomy
 - Transition coordination
- 
- Internist feel uncomfortable with childhood conditions
 - Family-centered care to Patient-centered care
 - Social work
 - Insurance, guardianship, day programs, respite
 - Pediatricians & families uncomfortable transitioning
 - No set transition plans/guidelines

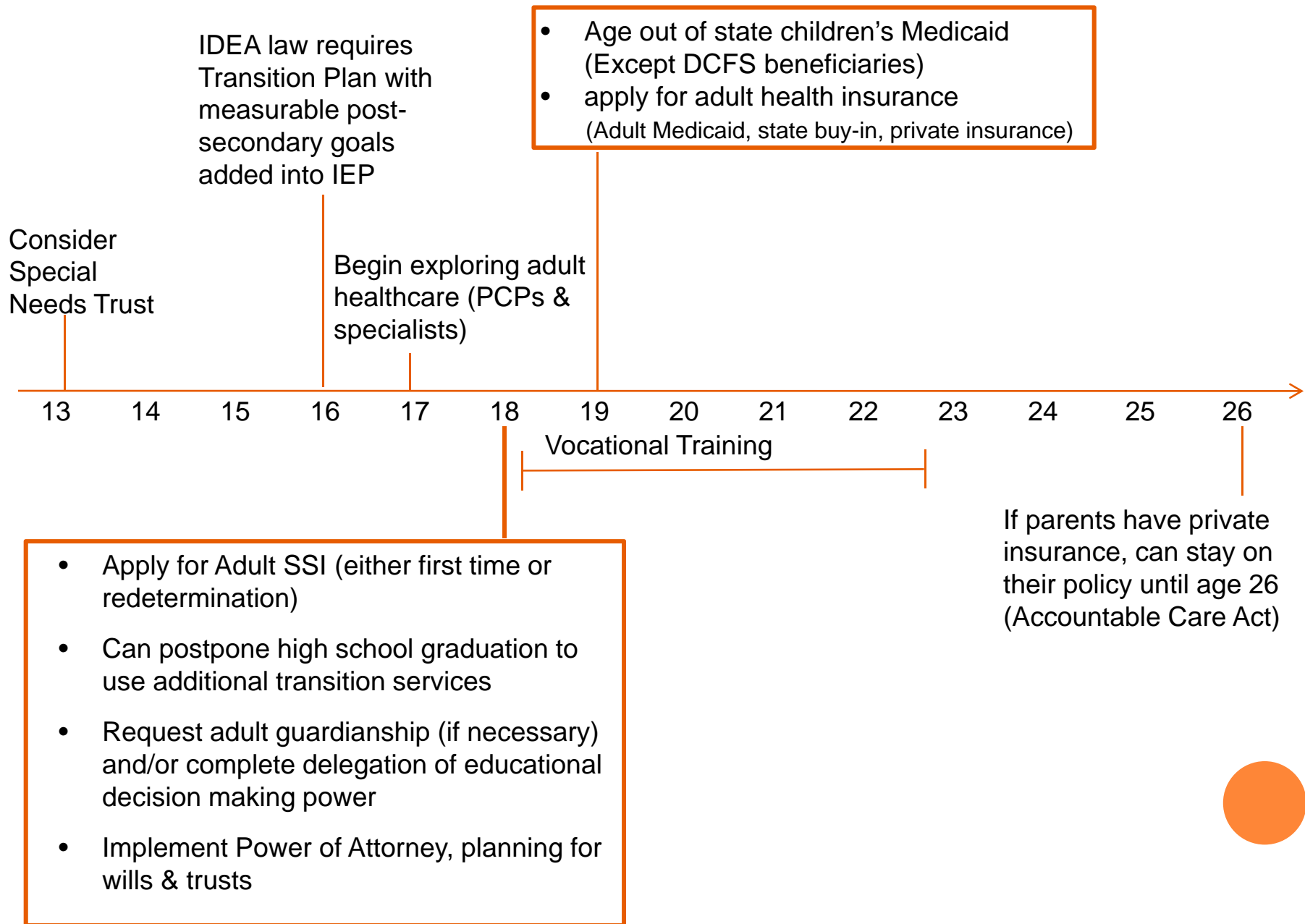
Peter, N. et al. Transition from Pediatric to Adult Care: Internists' Perspectives. Pediatrics 2009, 123 (2); 417-23.



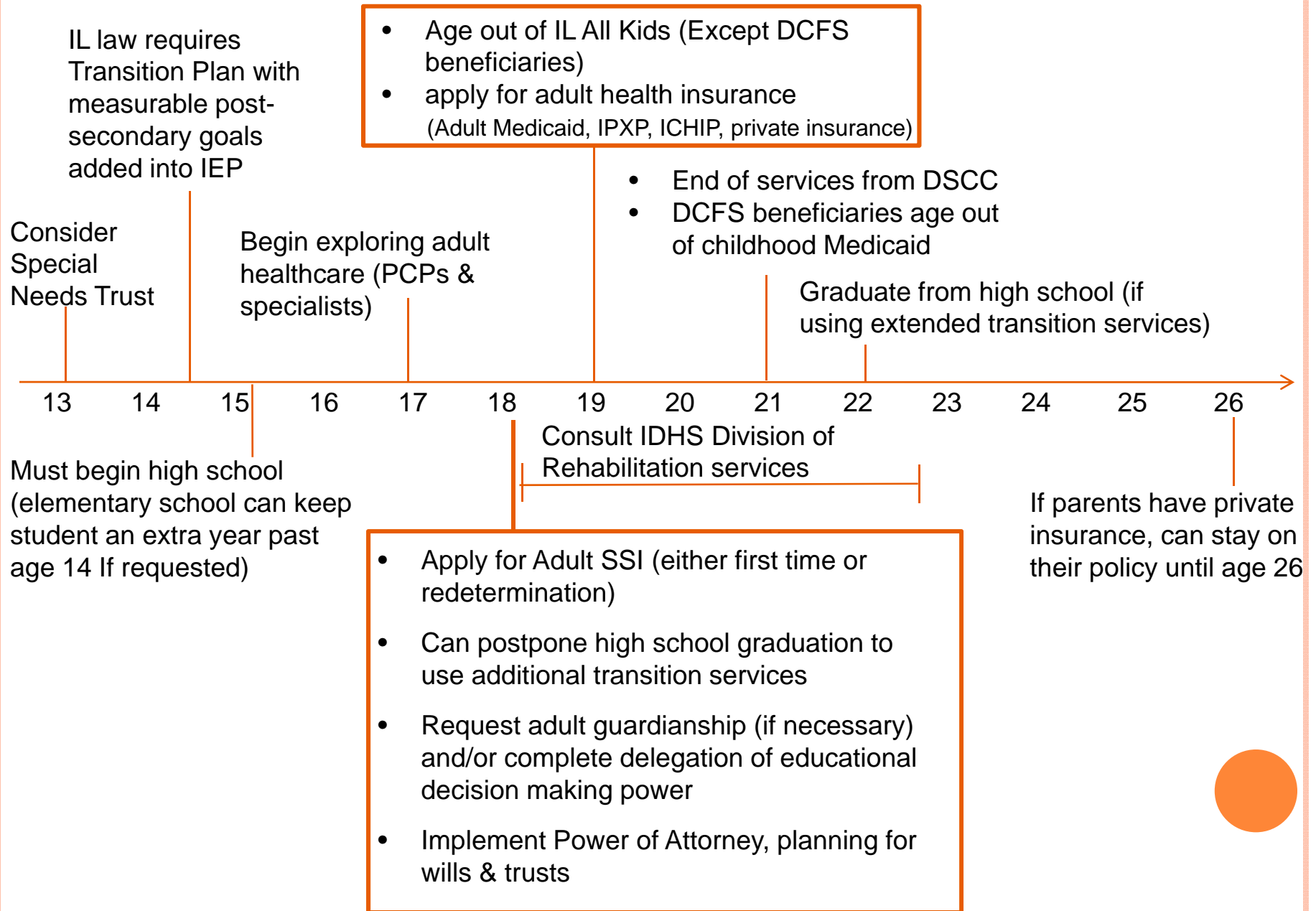
SO WHAT CAN WE DO ABOUT IT?



FEDERAL TRANSITION TIMELINE



IL 'TRANSITION 'TIMELINE



RESOURCES

<p>Got Transition http://www.gottransition.org</p>	<p>Wisconsin Transitions http://www.waisman.wisc.edu/cedd/products.php/</p>
<p>University of Chicago Transition Care http://transitioncare.uchicago.edu/</p>	<p>State Transitions http://ncset.edu/stateresources/resources/.asp</p>
<p>Transitions In Care-Transitions in Life Midwest Region NMPRA Meeting Website http://www.transitionsincaremidwest.com/</p>	<p>Children with Special Health Care Needs In Illinois the Division of Specialized Care for Children 800-322-3722 http://www.uic.edu/hsc/dscc</p>
<p>Adolescent health transition project at the University of Washington 206-685-1358 http://depts.washington.edu/healthtr/</p>	<p>National Dissemination Center for Children and Youth with Disabilities 800-695-0285 http://www.nichey.org/</p>
<p>ICAAP http://illinoisAAP.org/</p>	<p>Family resources center on disability 312-939-3513 http://www.fred.org/contact</p>
<p>Healthy Transitions http://healthytransitionsny.org/</p>	<p>Family Matters Parent Training and Info Center 866-436-7842 http://www.fmptic.org</p>
<p>State Transitions http://ncset.edu/stateresources/resources/.asp</p>	<p>Illinois network of centers for independent living 800-587-1227 http://www.incil.org/</p>
<p>Medical Home http://www.medicalhomeinfo.org/state_pages/</p>	<p>The Arc 301-565-3842 http://www.thearc.org</p>
<p>Healthcare Transitions Florida http://hctransitions.ichp.ufl.edu/about.php</p>	<p>Life Center at RIC www.lifecenter.ric.org</p>



RESOURCES

<p>Health and Disability Advocates http://www.hdadvocates.org/</p>	<p>Illinois Assistive Technology Program 800-852-5110 http://www.iltech.org</p>
<p>FloridaHats http://www.floridahats.org/</p>	<p>Job accommodation network www.jan.wvu.edu</p>
<p>Disability.gov http://www.disability.gov/</p>	<p>Healthy and Ready to Work National Center http://www.hrtw.org/</p>
<p>Cornucopia of Disability http://codi.buffalo.edu/</p>	<p>Health Benefits for workers with disabilities 800-226-0768 www.hbwdillinois.com/</p>
<p>Physician Parent http://physicianparent.org/</p>	<p>SSI for children 700-7272-1213 http://www.ssa.gov/pubs/10026.html</p>
<p>SSDI for disabled adult 800-772-1213 http://www.ssa.gov/pubs/10026.html#older-children</p>	<p>Division of Rehabilitation Services 800-226-6154 http://www.dhs.state.il.us/org/</p>
<p>SSI the work site 800-772-1213 http://www.socialsecurity.gov/work/index.html</p>	<p>Illinois state board of education 312-814-2220 http://www.isbe.state.il.us/</p>
<p>Illinois Provider Resources http://www.illinoisproviderdirectory.com/</p>	<p>Family Voices www.familyvoices.org/about/board</p>
<p>www.hctransitions.org/</p>	<p>Children's Memorial www.childrensmemorial.org/professionals/chronic-illness-transition.aspx (providers) http://www.childrensmemorial.org/parents/transitioning-to-adult-care.aspx (parents and families)</p> 

LITERATURE CITED

- ¹Magrab P, Millar, H, eds. *Surgeon General Conference. Growing Up and Getting Health Care: Youth with Special Health Care Needs*. Washington, DC: National Center for Networking Community Based Services, Georgetown University Child Development Center; 1988.
- ²Burke R, Spoerri M, eds. *Survey of Primary Care Pediatricians on the Transition and Transfer of Adolescents to Adult Health Care*. *Clinical Pediatrics* 2008; 47: 347-354.
- ³Harvey, Pinzon J. *Care of Adolescents with Chronic Conditions*. *Paediatr Child Health* 2006; 11: 43-8.
- ⁴Canadian Paediatric Society. *Transition to Adult Care for Youth with Special Health Care Needs*. *Paediatr Child Health* 2007; 12: 785-8.
- ⁵Wang G, Grembowski D, eds. *Risk of Losing Insurance During the Transition into Adulthood Among Insured Youth with Disabilities*. *Matern Child Health J* 2009.
- ⁶Newachek, PW., et al.. An epidemiologic profile of children with special health care needs. *Pediatrics*. 1998; 102(1): 117-23.
- ⁷Gortmaker, SI, W. Sappenfield. Chronic childhood disorders: prevalence and impact. *Pediatr Clin North Am*. 1984; 31(1): 3-18.
- ⁸American Academy of Pediatrics, Committee on Children with Disabilities and Committee on Adolescence. Transition of care provided for adolescents with special health care needs. *Pediatrics*. 1996; 98(6): 1203-6.
- ⁹Peter, NG., et al. Transition from Pediatrics to adult care: internists' perspectives. *Pediatrics*. 2009; 123 (2) 417-23.
- ¹¹Viner, R.. Barriers and good practice in transition fro paediatric to adult care. *Journal of the Royal Society of Medicinen*. 2001; 40(94): 2-4.

